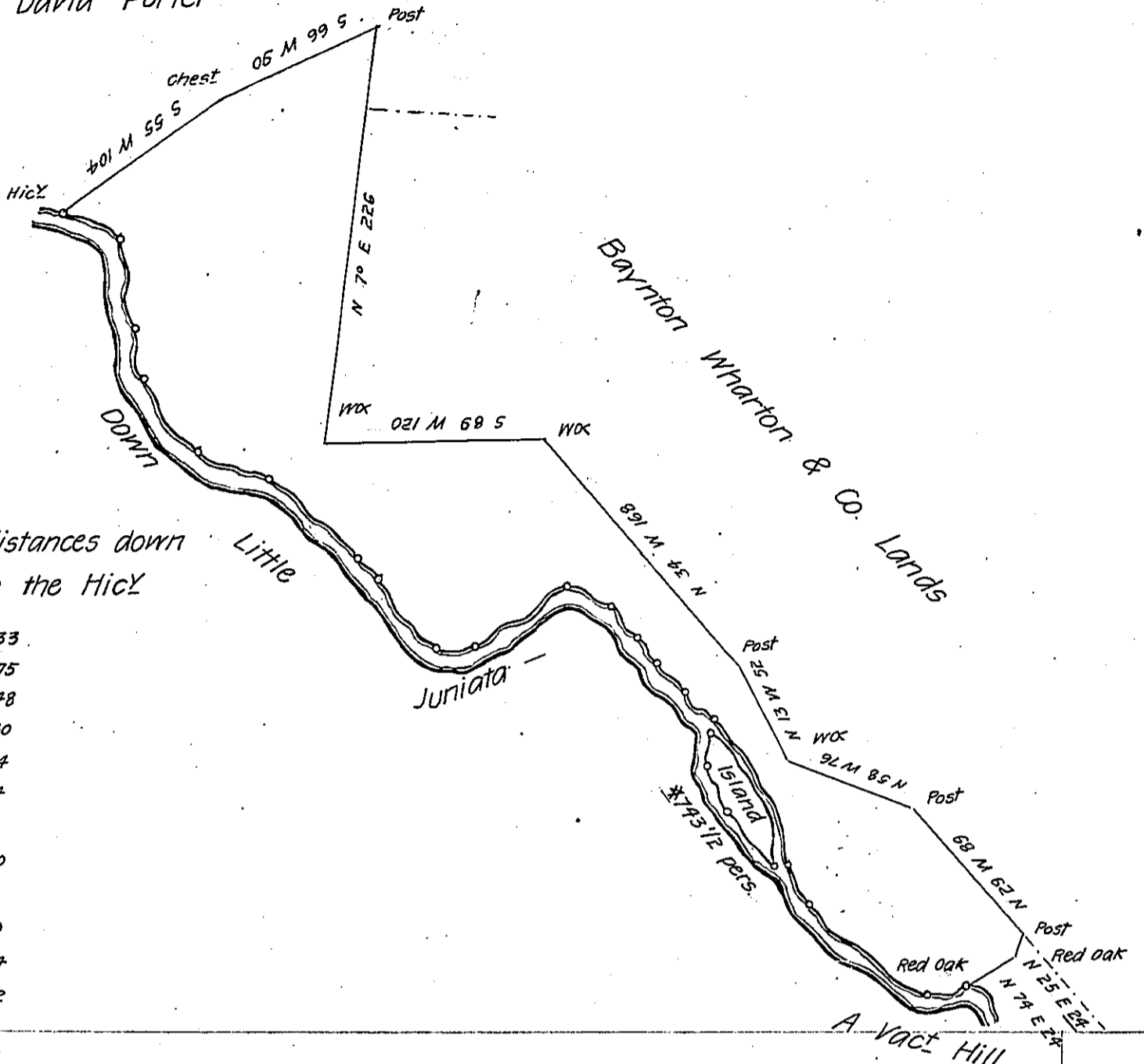


David Porter



The courses & distances down the River from the HicY

- S 62 E 33
- S 9 E 75
- S 35 E 48
- S 70 E 40
- S 56 E 24
- S 42 E 44
- S 50 E 14
- S 38 E 50
- East 20
- N 57 E 60
- S 63 E 24
- S 28 E 22
- S 24 E 16

- S 31 E 21
- S 35 E 21
- S 20 W 14
- ~~S 20 1/2~~
- South 20.5
- S 13 E 22
- S 34 E 45
- S 18 E 20
- S 40 E 84
- S 84 E 26
- to the red oak
- 743 1/2 pers.

Situate betwixt Little Juniata & the London Land

about three miles above the East branch, Containing

Three Hundred and two Acres, one hundred & fifty nine perches & the usual allowance of Six P. Cent for roads &c

Surveyed the third day of November 1796 by warrant to Alexander Ramsey Senr Dated the 21st day of June 1785 for 300 acres.

John Canan D.S.

Daniel Brodhead Esquire S.G.

IN TESTIMONY that the above is a copy of the original remaining on file in the Department of Internal Affairs of Pennsylvania, made conformably to an Act of Assembly approved the 16th day of February, 1833, I have hereunto set my Hand and caused the Seal of said Department to be affixed at Harrisburg, this nineteenth day of June 1906.

Loac P. Brown
Secretary of Internal Affairs.